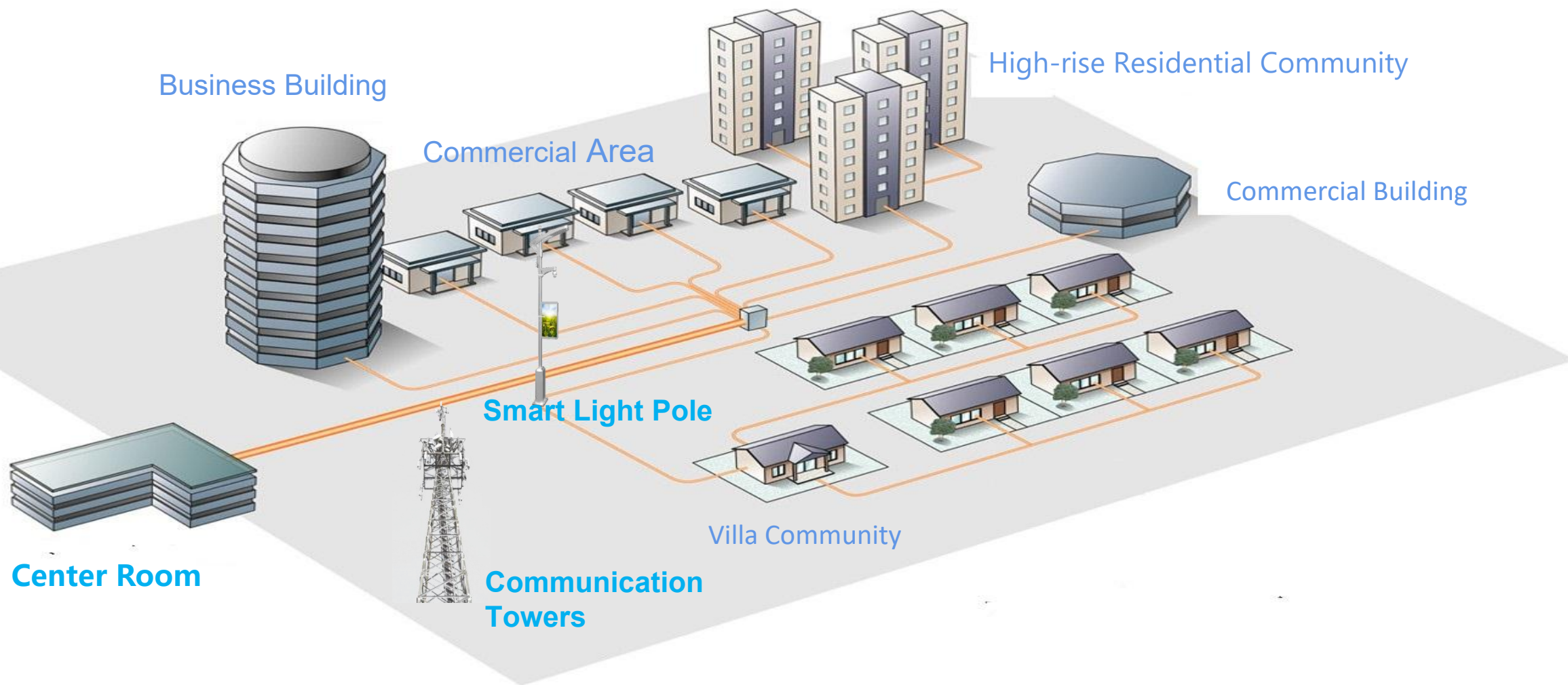


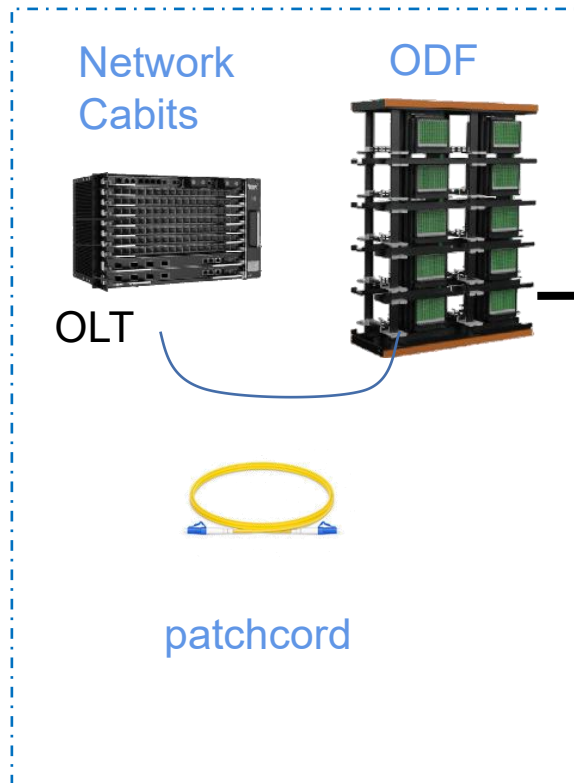
## FTTx solution for different Scenes



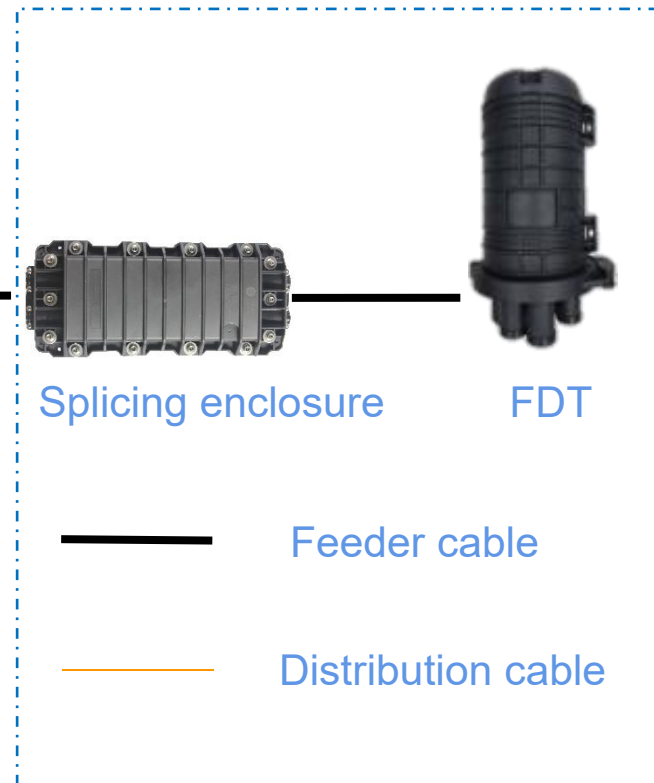
# FTTH Solution

## ODN 1.0

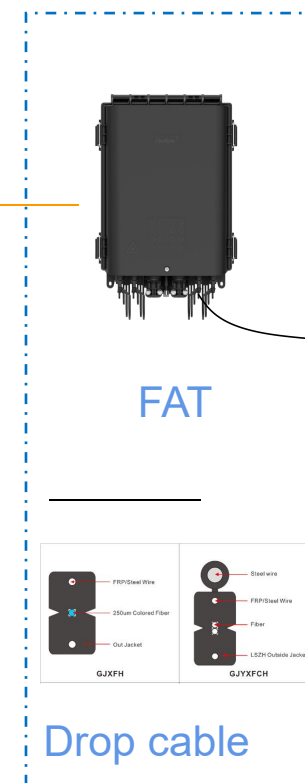
### Central Office/Base station



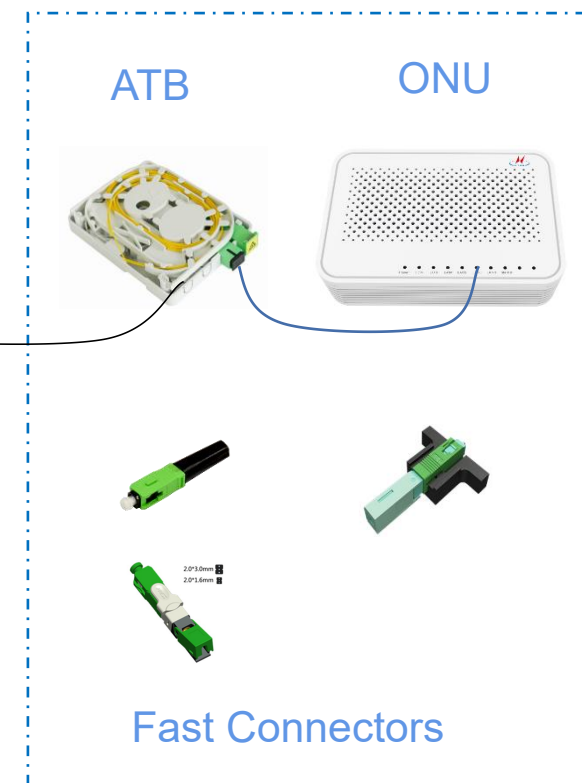
### Feeder Cable System



### Distribution Cable System



### Fiber Termination System



# FTTA Solution

①



## Integrated Outdoor Cabinet

- IP55
- Easy site selection, convenient and flexible installation
- Supports complete installation and assembling
- Modular design

BBU



Cabinet

↓ Assembly

RRU



Distribution box



②



## FTTA assembly

- 7.0mm, 4.8mm standardized design
- Plug and play

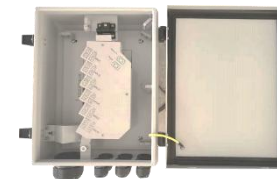
③



## Hybrid Cable Assemblies

- Integrated Optical Transmission
- Plug and Play
- Space saving

④

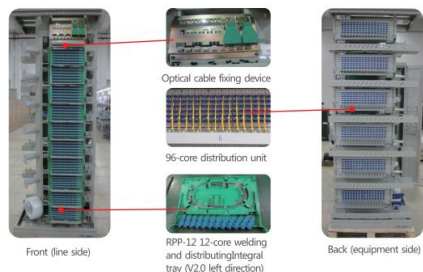


## Optoelectronic Distribution Box

- Boosting Photovoltaic Separation
- Optical unit conversion
- Easy and flexible installation

# Data Center

## Data Center Related



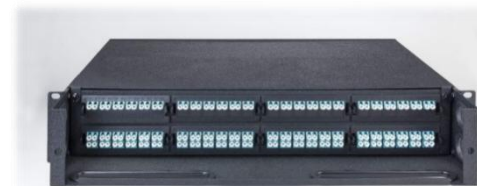
Optical distribution frame



100G QSFP28 DAC



40G QSFP+ to 4x10G SFP + DAC



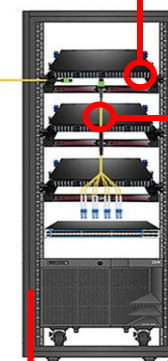
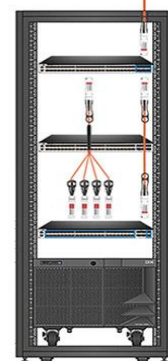
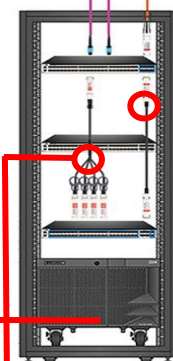
4U/2U MPO frame



MPO Module



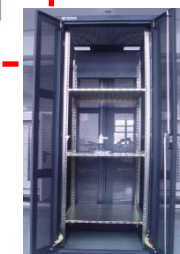
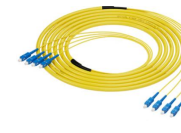
MPO-LC patchcord



100G QSFP28 AOC



Equipment Cabinets



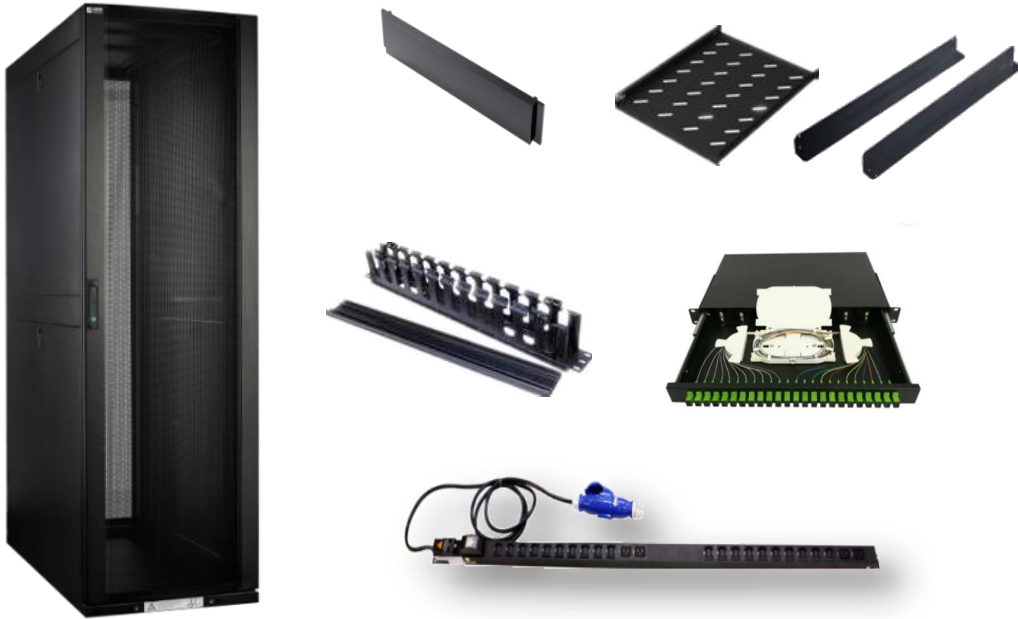
Network Cabinet



# FTTH Solution

## Central Office

### Network Cabinets



- Modular design, flexible choice of configuration according to actual needs;
- High dense permeability with >80% open area and >80% open aperture ratio;
- Meets 19" standard installation, fully compatible with third party IT equipment;

### Optical Distribution Frame

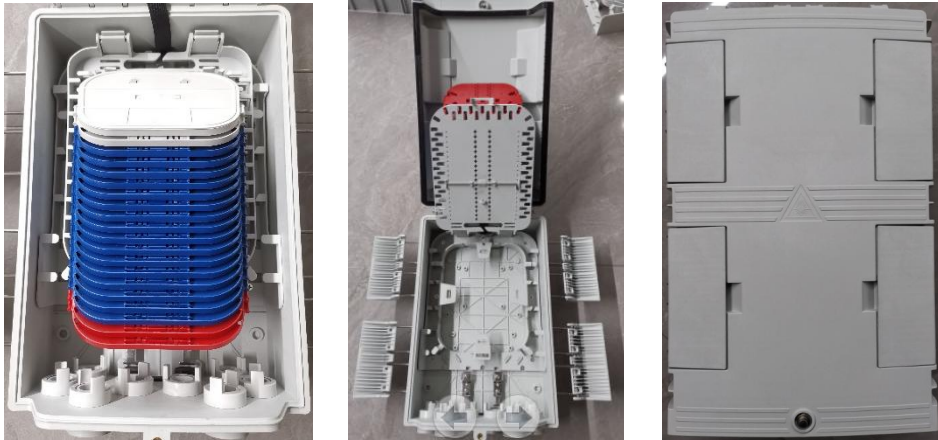


- The frame is made of high quality cold-rolled steel;
- Corrosion-resistant coating treatment on the surface;
- Modular design to meet different capacity requirements and compatible with different adapters;

# FTTH Solution

## Feeder Cable System

### Optical Splicing Enclosure (Horizontal)



- High performance PC/PP+GF material;
- IP68;
- Excellent impact and corrosion resistance;
- Wall/Pole-mounting, Aerial-hanger, Directly Buried;
- Working life: 25 years;

### Optical Distribution Cabinet (Dome)



# FTTH Solution

## Distribution Cable System

### Fiber Access Terminal



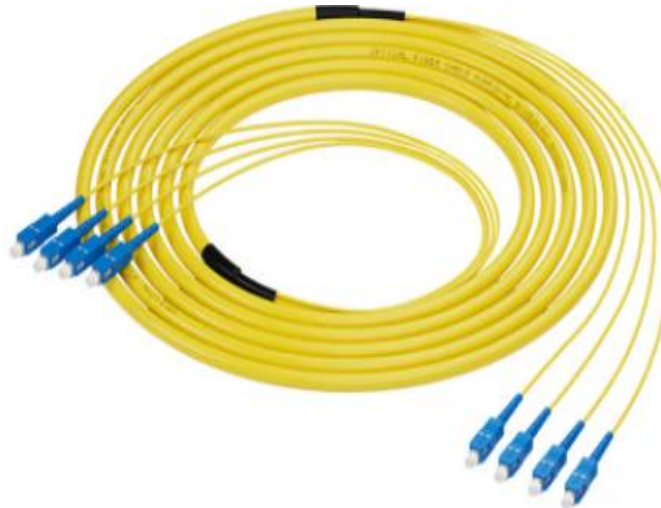
BEP

FD

- Water and dust resistance performance up to IP55;
- Product can accommodate drop cable with proper grommet;
- Cable, pigtails, patch cords path without disturbing each other;
- Product can accommodate micro package splitter;

## Distribution Cable System

### Pre-connected Drop Cable



- High precision ferrule used
- High echo reflection loss, low insertion loss, good repeatability and interchangeability
- Variety of connectors are available (SC\FC\LC\ST)
- Outer diameter/length/fiber cores can be customized

## Fiber Termination System

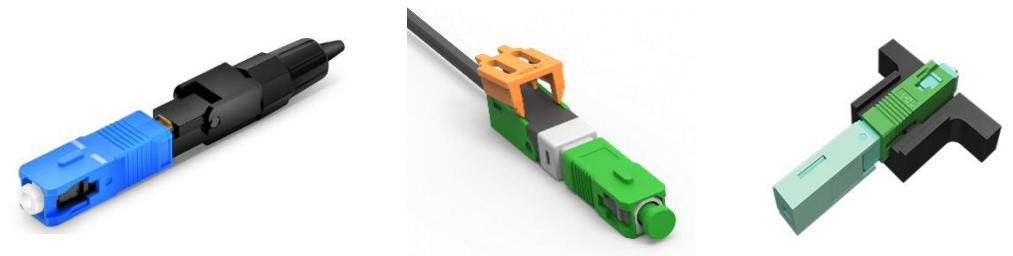
### Access Terminal Box

R&D



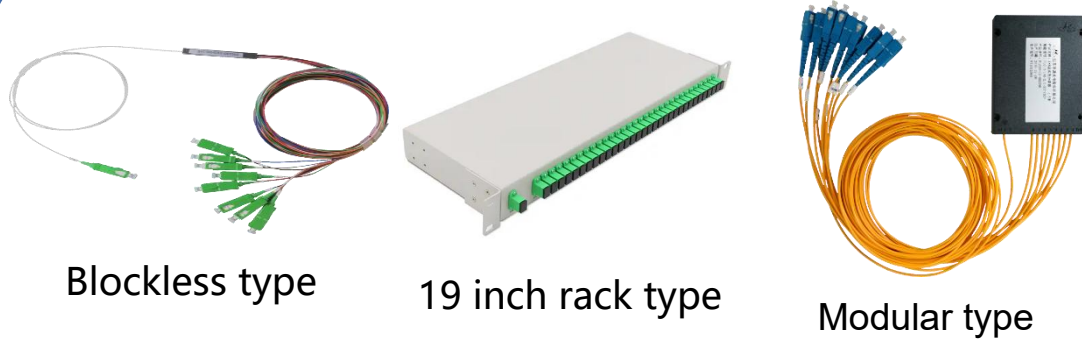
- High performance ABS+PC material;
- IP 20;
- Excellent impact and corrosion resistance;
- Wall-mounted;
- Working life:25 years.

### Fast Field Assembly



- Suitable for the rapid termination of optical drop cables;
- IL:Average $\leq 0.35\text{dB}$ , Max.  $\leq 0.5\text{ dB}$
- RL:(APC) $\geq 50\text{dB}$ , :(UPC) $\geq 40\text{dB}$
- Tensile $\geq 50\text{N}$ ;
- Working life:5 years.

## Passive Optical Component——Splitter



Blockless type

19 inch rack type

Modular type



Cassette type

- Low insertion loss, low polarization dependent loss, high return loss
- Excellent flatness and uniformity in the full band wavelength range of 1260~1650nm
- Variety of package forms

## Passive Optical Component——Connector



- High precision ferrule used
- High echo reflection loss, low insertion loss, good repeatability and interchangeability
- Variety of connectors are available (SC\FC\LC\ST)
- Outer diameter/length/fiber cores can be customized

## Outdoor Cabinet



- Small, compact housing
- Modular configuration for smooth expansion
- Versatile, flexible and easy to install: both complete assemblies (complete delivery for on-site lifting or handling) and assembled assemblies (loose delivery for on-site assembly) are supported

## FTTA Cable Assembly



- Meet high compression performance, easy to flexible wiring
- Plug and play
- Various sizes available (4.8/5.0/7.0mm)



- Optoelectronics Hybrid Transport Technology
- 4 optical 3 electric, Diameter only 12mm
- Pre-connected, Plug and play
- Make full use of pipeline resources